

Sediment delivery ratio in a small semi-arid watershed under conditions of low connectivity¹

Razão de aporte de sedimentos em pequena bacia hidrográfica semiárida em condições de baixa conectividade

Julio Cesar Neves dos Santos^{2*}, Eunice Maia de Andrade³, Pedro Henrique Augusto Medeiros⁴, Helba Araújo de Queiroz Palácio⁴ and José Ribeiro de Araújo Neto⁴

ABSTRACT - The semi-arid region in the northeast of Brazil is characterised by rains of high intensity and short duration, with the processes of erosion being aggravated by an inappropriate land-use model. In this region, the lack of measured data for runoff and sediment yield increases the need to apply hydro-sedimentological models in estimating erosion, requiring knowledge of the actual sediment delivery ratio for the region. The aim of this study therefore, was to map soil erosion, making use of the Universal Soil Loss Equation (USLE), in the Iguatu Experimental Watershed (IEW). The mean annual sediment delivery ratio (SDR), and the SDR for individual events, was calculated from hydro-sedimentological measurements, contributing to an understanding of the processes of sediment propagation in the Brazilian semi-arid region, allowing identification of areas susceptible to water erosion. The IEW has an area of 16.74 km² and is equipped with sensors for the continuous measurement of rainfall, flow and sediment yield. The mean annual SDR for the IEW was 0.37%. The SDR for individual rainfall events ranged from 0.08 to 1.67%, with an average of 0.68%. Among the main variables that influence the SDR for individual events is the magnitude of rainfall depth and antecedent soil moisture that can be better represented by the total antecedent precipitation of the previous 15 days. According to maps of soil loss, only 6.27% of the watershed presented losses beyond tolerable limits.

Key words: Sediment yield. Soil erosion. USLE. SDR.

RESUMO - O semiárido do Nordeste brasileiro é caracterizado por chuvas de alta intensidade e curta duração e os processos erosivos são agravados pelo inadequado modelo de uso do solo. Nessa região, a carência de dados medidos de escoamento e produção de sedimento aumenta a necessidade de aplicação de modelos hidrossedimentológicos para a estimativa da erosão, necessitando o conhecimento da real taxa de aporte de sedimentos para a região. Neste sentido, o objetivo deste estudo é mapear a erosão do solo com uso da Equação Universal de Perda de Solo (USLE) na Bacia Experimental de Iguatu (BEI) e calcular a razão de aporte de sedimentos (SDR- *Sediment Delivery Ratio*) média anual e por eventos individuais a partir de medidas hidrossedimentológicas, contribuindo para o entendimento dos processos de propagação de sedimentos no semiárido brasileiro, o que permite a identificação de áreas susceptíveis à erosão hídrica. A BEI apresenta uma área de 16,74 km² e foi equipada com sensores para mensurações contínuas de precipitação, vazão e produção de sedimentos. O SDR médio anual para a BEI foi de 0,37%. Os SDR para eventos pluviométricos individuais variaram de 0,08 a 1,67%, com média de 0,68%. Entre as principais variáveis que influenciaram o SDR para eventos individuais está a magnitude da altura pluviométrica e a umidade antecedente do solo, que pode ser melhor representada pela precipitação total antecedente dos últimos 15 dias. De acordo com os mapas de perda de solo, apenas 6,27% da bacia apresentou perdas muito além dos limites toleráveis.

Palavras-chave: Produção de sedimentos. Erosão do solo. USLE. SDR.

DOI: 10.5935/1806-6690.20170006

*Autor para correspondência

¹Recebido para publicação em 09/09/2015; aprovado em 21/03/2016

Parte da Tese de Doutorado do primeiro autor apresentada à Universidade Federal do Ceará

²Instituto Federal do Triângulo Mineiro/IFTM, Fazenda Sobradinho, S/N, Caixa Postal:592, Uberlândia-MG, 38.400-974, Brasil, juliocearnds@yahoo.com.br

³Departamento de Engenharia Agrícola, Centro de Ciências Agrárias, Universidade Federal do Ceará, Fortaleza-CE, Brasil, eandrade.ufc@gmail.com

⁴Instituto Federal do Ceará/IFCE, Fortaleza-ce, Brasil, phamedeiros@gmail.com, helbaraujo23@yahoo.com.br, juniorifcelabas@gmail.com

INTRODUCTION

Soil erosion is currently one of the most serious environmental problems in the world, since it seriously endangers the environment, agriculture and water resources, and reduces the storage capacity of reservoirs (ALEXAKIS *et al.*, 2013; PRASANNAKUMAR *et al.*, 2012; RAHMAN *et al.*, 2009; ZHOU; WU, 2008). Erosion is a major cause of land degradation; it is therefore necessary to establish conservation measures and ensure the development of a sustainable management of soil resources (RAHMAN *et al.*, 2009).

Determination of the spatial distribution of soil loss is important to identify those areas prone to erosion, and develop plans for the administration of specific locations which are at high risk of erosion (IRVEM *et al.*, 2007). The mapping and assessment of erosion risk, as well as spatial and quantitative information on soil erosion, contribute significantly to administration, soil management and conservation, and erosion control in watersheds (ALEXAKIS *et al.*, 2013; PRASANNAKUMAR *et al.*, 2012).

Erosion simulation models, especially distributed models, are useful for evaluating different land use strategies and improving land administration in watersheds (BESKOW *et al.*, 2009). The most commonly adopted empirical models are the Universal Soil Loss Equation (USLE) (WISCHMEIER; SMITH, 1978) and its derivatives, such as the Revised Universal Soil Loss Equation (RUSLE).

Soil erosion models, such as the USLE (WISCHMEIER; SMITH, 1978) only estimate gross erosion rates on the scale of an agricultural plot or lot. Erosion rates estimated by USLE are therefore higher than those measured at the outflow of a watershed. To consider the effect of sediment deposition throughout its trajectory (BRACKEN; CROKE, 2007; FRYIRS *et al.*, 2007), the concept of a Sediment Delivery Ratio (SDR) has been widely employed, defined as the fraction of gross erosion transported from a given area in a given time interval to the outflow of the watershed (LU *et al.*, 2006).

Studies, such as that of Santos *et al.* (2014) who, studying small basins inserted in the Iguatu Experimental Watershed in the State of Ceará, calibrated and validated the C factor in the USLE and the energy term coefficients in the Modified Universal Soil Loss Equation (MUSLE), for ground cover of native caatinga, thinned caatinga and grass (*Andropogon gayanus* Kunt / after slash and burn) in the semi-arid region. However, studies of the Brazilian semi-arid region and, more precisely, of the Caatinga biome, which examine and quantify the actual sediment delivery ratio (SDR) are rare. By using the USLE model,

such studies can help in identifying the actual rate of sediment transported to a given reservoir, as well as in the precise mapping of the most productive areas of sediment, aiding the work of soil conservation.

The aim of this study therefore was to map soil erosion in the Iguatu Experimental Watershed (IEW) using the USLE model, and determine the mean annual sediment delivery ratio (SDR), as well as the SDR for individual hydrological events, contributing to an understanding of the processes of sediment propagation in the semi-arid region of Brazil, which would allow the identification of areas susceptible to water erosion.

MATERIAL AND METHODS

Study area

The Iguatu Experimental Watershed (IEW) is located in the semi-arid region of Ceará, inserted in the basin of the Upper Jaguaribe in the town of Iguatu, at 6°23'36" to 6°23'57" S and 39°15'15" to 39°15'30" W. The climate in the region, according to the Köppen climate classification, is type BSw'h', hot semi-arid. The Thornthwaite aridity index is 0.44, classified as semi-arid. Mean historical rainfall for the town of Iguatu is 864 ± 304 mm, of which 85% is concentrated in the period from January to May, and around 30% is recorded during March (SANTOS *et al.*, 2014).

The IEW has an area of 16.74 km², with an average slope of 9%. To measure surface runoff, the control section in the outflow of the watershed consists of a spillway equipped with a pressure-transducer type level sensor connected to a datalogger with an acquisition interval of 5 min, allowing generation of the hydrographs and the total runoff depth.

To quantify sediment yield, a turbidity and sediment sensor (turbidimeter) with an acquisition interval of 15 min was installed near the level sensor. Samples of water and sediment were collected by the equal-width increment method for calibration of the turbidimeter. The study period covered the rainy seasons of 2013 and 2014, with 61 natural rainfall events being recorded, and runoff occurring in eight of these events.

Universal Soil Loss Equation (USLE)

To estimate erosion potential in the IEW, the Universal Soil Loss Equation (USLE) was used (Wischmeier and Smith, 1978), expressed by Equation 1.

$$A = R \times K \times L \times S \times C \times P \quad (1)$$

where: A is mean annual soil loss, $t\ ha^{-1}\ yr^{-1}$; R is the rainfall erosivity factor, $MJ\ mm\ ha^{-1}\ h^{-1}$; K is the soil erodibility factor, $t\ h\ MJ^{-1}\ mm^{-1}$; L is the topographic factor expressing slope length, dimensionless; S is the topographic factor expressing slope steepness, dimensionless; C is the factor for land use and management, dimensionless; and P is the factor for conservation practices, dimensionless.

Erosivity index (R)

For each monitored rainfall event, the intensities (I, $mm\ h^{-1}$), and the maximum intensity over 30 minutes (I30, $mm\ h^{-1}$) were calculated. The kinetic energy (KE) associated with rainfall, $MJ\ ha^{-1}\ mm^{-1}$, was obtained by Equation 2, proposed by Wischmeier and Smith (1978) modified by Foster *et al.* (1981).

$$KE = 0.119 + 0.0873 \text{ Log } I \quad (2)$$

where: KE is the kinetic energy of the rainfall, in $MJ\ ha^{-1}\ mm^{-1}$; I is the rainfall intensity in $mm\ h^{-1}$. The values obtained by equation 2 were used to calculate the erosivity index, EI30, from Equation 3.

$$EI30 = KE \times I30_{max} \times P \quad (3)$$

where: EI30 is the erosivity index, represented as the R factor, in $MJ\ mm\ ha^{-1}\ h^{-1}$; I30_{max} is the mean maximum intensity of the rainfall over 30 minutes, in $mm\ h^{-1}$; P is the rainfall depth in mm.

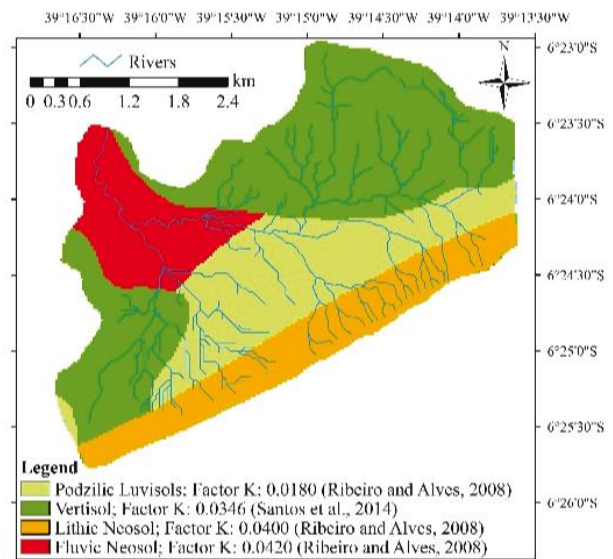
Soil erodibility index (K)

The soils of the watershed are Podzolic Luvisols (24.25%), Vertisols (45.63%), a Fluvic Neosol (13.06%) and a Lithic Neosol (17.05%) (SiBCS) (Figure 1). The class of soils with the greatest occurrence in the watershed was the Vertisols (45.63%); these soils are characteristic of expansive clays, with high rates of infiltration when dry (especially in the cracks), and low rates when wet. The map of soil and erodibility (K factor) (Figure 1) was developed, based on published values from studies in the IEW (SANTOS *et al.*, 2014), and from other works on the same types of soil in the watershed under study (RIBEIRO; ALVES, 2008).

Topographic factor (LS)

To estimate the topographic factors (L and S), a digital terrain elevation model was used (Figure 2A) with a resolution of 30 m, prepared with images from the Shuttle Radar Topography Mission (SRTM). The LS factor was calculated by combining the products of the L and S factors. The factor for slope length (L) was calculated for each pixel of the grid, as per Equation 4, suggested by Desmet and Govers (1996):

Figure 1 - Map of soil and erodibility (K factor), for the Iguatu Experimental Watershed (IEW)



$$L = \frac{(U + D^2)^{m+1} - U^{m+1}}{D^{m+2} X^m (22.13)^m} \quad (4)$$

where: U is the area of flow contribution to the cell (m^2); D is the cell size (m); x is a correction factor for cell orientation (equal to 1 when the flow exits through one of the four sides, and equal to 1.41 when the flow exits through a corner). The m parameter is a function of the average slope of the pixel (s) (Figure 2B):

$$m = 0.5; s > 5\%$$

$$m = 0.4; 3\% > s > 5\%$$

$$m = 0.3; 1\% > s > 3\%$$

$$m = 0.2; s < 1\%$$

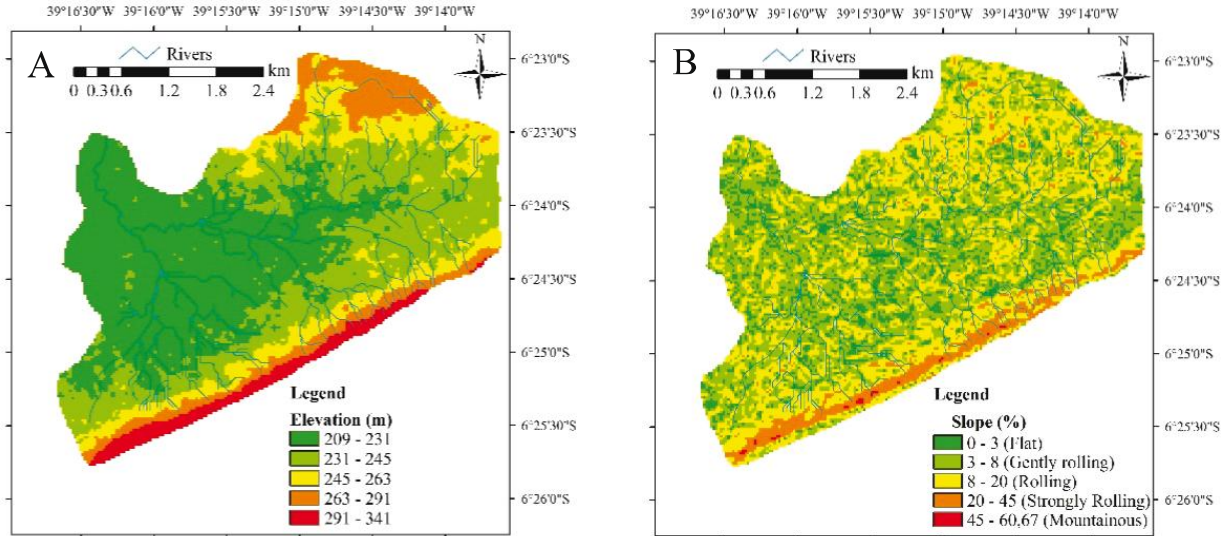
The slope factor (S) was calculated from the slope map (d, $m\ m^{-1}$) as per equation 5 from Williams and Arnold (1997):

$$S = (65.41 d^2 + 4.56 d + 0.065) \quad (5)$$

Ground cover and soil management factor (C)

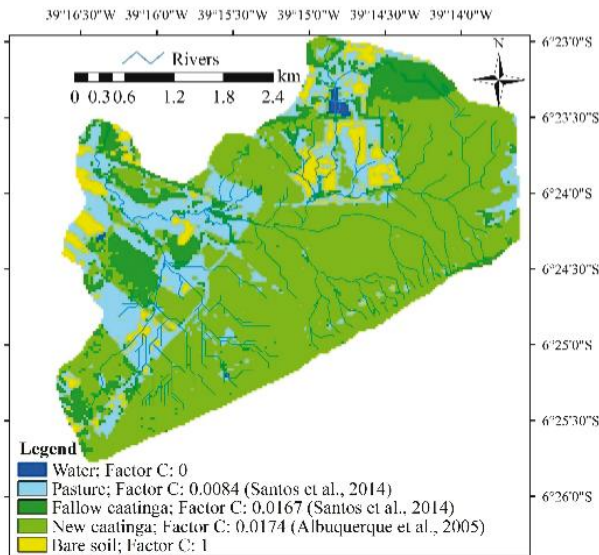
For classification and generation of the ground cover and land use map, a Landsat 5, TM sensor image of 18 October 2008 from orbit/point 217/64 was used. The image was classified by supervised classification algorithm, using the ENVI 4.2 software, defining five classes in the watershed: water, new caatinga, fallow caatinga, bare soil and pasture.

Figure 2 - Digital terrain elevation model (B) and slope map (%) (B), for the Iguatu Experimental Watershed (IEW)



The C factor is related to land use and indicates soil erosion vulnerability. The C factor map (Figure 3) was developed based on published values from studies in the IEW (SANTOS *et al.*, 2014), and from other studies of similar ground cover (ALBUQUERQUE *et al.*, 2005).

Figure 3 - Land use and C factor map, for the Iguatu Experimental Watershed (IEW)



Conservation practices factor (P)

The P factor is the ratio between soil loss from a soil cultivated under a determined conservation practice,

and the corresponding loss cultivated further downhill (PANDEY *et al.*, 2007). In the present study, following the procedure adopted by Beskow *et al.* (2009), a value of 1.0 was assigned to the P factor over the entire area, since there were no erosion control practices in the watershed under study.

Sediment delivery ratio (SDR)

The annual sediment delivery ratio (SDR), and those for runoff-generating rainfall events, were calculated from the ratio between sediment yield, measured at the outflow of the watershed, and gross soil loss from erosion, estimated by the Universal Soil Loss Equation (USLE), as per equation (6):

$$SDR(\%) = \left(\frac{SY}{A} \right) \times 100 \tag{6}$$

where: SY is sediment yield that actually left the watershed ($t\ ha^{-1}$), and A is the soil loss per unit of area ($t\ ha^{-1}$) estimated by the USLE.

RESULTS AND DISCUSSION

Estimated gross erosion for the IEW using the USLE

The IEW presents a K factor greater than $0.03\ t\ h\ MJ^{-1}\ mm^{-1}$ for 75.75% of its area (Figure 1), indicating a high susceptibility to water erosion (BESKOW *et al.*, 2009). Typic Carbonatic Ebanic Vertisols, rich in expansive clays, represent 45.6% of the watershed with a value for erodibility of $0.0346\ t\ h\ MJ^{-1}\ mm^{-1}$,

measured in the field by Santos *et al.* (2014) at erosion-plot scale in the study area (IEW).

With the exception of the dividers to the south of the watershed, most of the watershed has an LS value of less than four, which shows a moderate vulnerability to erosion (BESKOW *et al.*, 2009; RAHMAN *et al.*, 2009). This result is due to the distribution of slopes in the watershed (Figure 2B), where only 14% of the area has slopes greater than 15%, the terrain being classified as from rolling (steep) to mountainous (very steep) (ALEXAKIS *et al.*, 2013).

The watershed also displays ground cover with a high degree of preservation (Figure 3), where 59.12% is covered with new caatinga and 12.82% covered with fallow, dense caatinga, giving a total of 71.94% of the watershed, and representing an area of 12.04 km². The remaining classes were pasture, representing 21.38% of the watershed, followed by bare soil with 6.27%, and water (artificial surface reservoirs) with 0.41%.

According to simulations using the USLE (Figure 4), assuming the constant maintenance of plant cover during the study period (2013-2014) (Factor C - Figure 3), soil loss varied spatially in the IEW from 0 to 890 t ha⁻¹ yr⁻¹ for 2013, and 0 to 1,498 t ha⁻¹ yr⁻¹ for 2014. These results corroborate those reported by Lopes *et al.* (2011) and Silva *et al.* (2014), working in watersheds in the semi-arid region of northeastern Brazil.

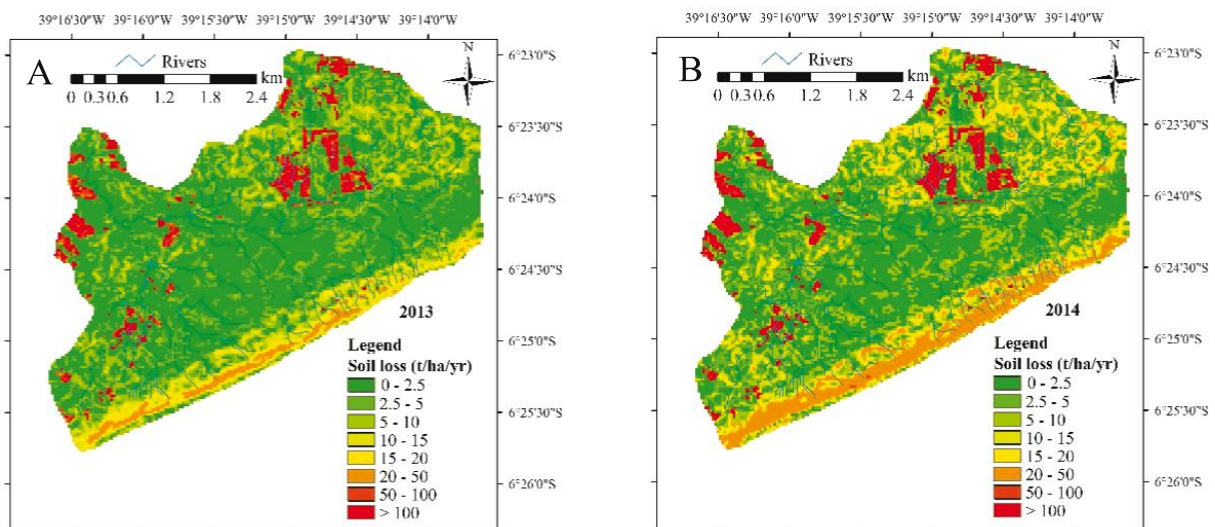
In 2013 (Figure 4A), the R factor was 4,480 MJ mm ha⁻¹ h⁻¹, increasing in 2014 (Figure 4B) to 7,536 MJ mm ha⁻¹ h⁻¹. The higher erosivity index in 2014

increased the area of the watershed, with soil losses in excess of 20 t ha⁻¹ yr⁻¹ (Figure 4B), going from 8.3% in 2013 to 14.3% of the watershed in 2014. These areas which are more susceptible to erosion (Figure 4) are mainly located in zones with slopes greater than 20% (Figure 2B), and with soils classified as Lithic Neosols (Figure 1), to the south of the watershed. The combination of soils of high erodibility with high slopes, together with elevated indices of erosivity, results in a large breakdown of sediment, requiring only flow energy for its transport.

The red shading on the maps, for soil losses exceeding 100 t ha⁻¹ yr⁻¹ (Figure 4A and B), are associated with areas of high slopes (>20%), and areas of bare soil (6.27% of the watershed), where overgrazing is practised (grazing with a greater number of animals than the capacity of the area), degrading the soil and leaving it susceptible to the processes of erosion. Erosion in these areas is further aggravated by soils of high erosion potential: the Vertisols and the Fluvic Neosol (Figure 1) (RIBEIRO; ALVES, 2008; SANTOS *et al.*, 2014).

Around 88.2% of the area of the IEW was classified as being at low risk of erosion (BESKOW *et al.*, 2009; PRASANNAKUMAR *et al.*, 2012), less than 5 t ha⁻¹ yr⁻¹, even in 2014, with 93.3% of the watershed showing soil losses of less than 10 t ha⁻¹ yr⁻¹. These results are similar to those obtained by Lopes *et al.* (2011), working in the Varjota River watershed in the semi-arid region of the State of Ceará, where they found 74% of the watershed with a mean annual soil loss of less than 11 t ha⁻¹ yr⁻¹, by the USLE.

Figure 4 - Maps showing the rate of soil loss (t ha⁻¹ yr⁻¹) for 2013 (A) and 2014 (B), for the Iguatu Experimental Watershed (IEW)



Annual sediment delivery ratio (SDR) and by event, for the IEW

The mean annual value for the SDR was 0.37%, showing that for the years under study, 2013 and 2014, only 0.48% and 0.26% respectively of the soil loss in the watershed (estimated using the USLE model) were transported and exported beyond the outflow of the watershed (Table 1). However, it is worth noting that for the years being studied, the mean annual rainfall was below the historical average (864 mm), and may therefore indicate conditions of low hydrological connectivity when compared to years with above average and temporally well-distributed rainfall (BRACKEN *et al.*, 2013; FRYIRS *et al.*, 2007; FRYIRS, 2013).

Other factors which contribute to the low mean SDR are the larger slopes in regions close to the dividers of the watershed (Figure 2B), followed by the areas of low slopes throughout the watershed and near the outflow, which favour deposition of disaggregated sediment, reducing the rate of sediment yield and, as a consequence, the sediment delivery ratio (MEDEIROS *et al.*, 2014). De Vente *et al.* (2008), studying 61 watersheds in the semi-arid region of Spain, with areas ranging from 29 to 13,246 km², found an SDR varying between 0.3% and 55.5%. Zhou and Wu (2008) found SDR values ranging from 0.1% to 37% in sub-basins from the Chaobaihe River to the Miyun Reservoir in China. In Brazil, studies such as that of Beskow *et al.* (2009), also found lower annual values for the SDR, with a mean value of 1.62% for the Rio Grande Watershed, in the State of Minas Gerais, with an area of 6,273 km².

It should be noted that the low values for annual SDR of the IEW (Table 1) may be associated with annual rainfall below the historical average, since in the years under study, events with high return periods and high hydrological connectivity, capable of transporting large amounts of sediment, may not have occurred. Medeiros and Araujo (2014), in a study with nested basins, also in the watershed of the Upper Jaguaribe, showed that 10% of the most critical rainfall events were responsible for 88% and 98% of sediment yield for the Aiuaba (12 km²) and Benguê (900 km²) watersheds respectively. According to those authors, in rainfall events of small depth (short return period), the sediment is mobilised but not transported to the outflow. Whereas rainfall events of great depth find much

available sediment, which is transported under conditions of high connectivity. According to Fryirs *et al.* (2007), except for the occurrence of extreme events, lowlands and terraces along the floodplain are not connected, and maintain their ability for buffering (stopping or weakening runoff and sediment). In general, sediment derived upstream, i.e. areas of high slope at the dividers of the IEW (Figure 4A and B), can be deposited on the surfaces of the flood plains, and during high magnitude events the connectivity between landscape units is increased, thereby maximising the “area of effective influence”, which can generate more energy for the runoff and a greater production of sediments in the watershed (FRYIRS *et al.*, 2007).

Annual values for sediment yield (Table 1) were low compared to those found by Beskow *et al.* (2009) and Alexakis *et al.* (2013). However, Silva *et al.* (2014) obtained similar results while studying the Tapacurá Watershed in the State of Pernambuco, Brazil, with an area of 470 km² and a hot and humid tropical climate, showing annual sediment yield ranging from 0.01 to 0.17 t ha⁻¹ yr⁻¹, and SDR values which varied around 8%.

The characteristics of shallow soils and intermittent runoff in the IEW promote sediment deposition throughout the watershed. The low value for SDR in the watershed may also be linked to the low slopes, as more than 50% of the watershed has slopes of less than 8%. The different elevations display large zones where transport energy is dissipated, possibly causing sediment deposition throughout the watershed. Another point that contributes to dissipation of the energy for sediment transport is the vegetation, as caatinga is found in 71.94% of the IEW (fallow or in a state of development) (Figure 3). According to Bracken and Croke (2007) and Santos *et al.* (2011) bands of vegetation act as barriers to sediment transport, favouring infiltration into the soil as a result of the increase in organic matter and the reduction in soil density that increase hydraulic conductivity. The vegetation also works to dissipate runoff energy, resulting in greater opportunity time for the processes of infiltration and sediment deposition (SANTOS *et al.*, 2011). Runoff and sediment connectivity along the slopes and in the watershed decrease as the plant cover increases (FRYIRS *et al.*, 2007).

Table 1 - Annual values for rainfall, erosivity, observed sediment yield (SY), gross erosion estimated by the USLE, and SDR, for the Iguatu Experimental Watershed (IEW)

Year	Rainfall (mm)	EI30 (MJ mm ha ⁻¹ h ⁻¹)	Runoff (mm)	Observed SY (t ha ⁻¹ yr ⁻¹)	Estimated erosion (t ha ⁻¹ yr ⁻¹)	SDR (%)
2013	639	4.480	71.79	0.095	19.81	0.48
2014	772	7.536	79.37	0.086	33.32	0.26
Mean	706	6.008	75.58	0.090	26.56	0.37

Another factor in the reduction of the SDR is the presence of surface reservoirs (LU *et al.*, 2006). For Bracken and Croke (2007) and Fryirs *et al.* (2007) these structures inhibit or limit the movement of sediment along the canals, acting to break hydrological and sedimentological connectivity. In the IEW there are four small reservoirs, giving a total basin of 6.86 ha, the largest being of 4.5 ha. These reservoirs act as structures for breaking connectivity, retaining a portion of the disaggregated sediment and reducing transport capacity to the outflow of the watershed.

SDR values for individual runoff-generating events ranged from 0.08% to 1.67%, with an average of 0.68% (Table 2). These low values demonstrate the high capacity of the watershed for the retention of disaggregated sediment. Analysing the two events that generated runoff in 2013 (9 May and 10 May), it can be seen that the first event, even with precipitation and erosivity at 238% and 581% higher than the second event respectively, displayed a lower SDR, with a value of 0.53% (Table 2). This behaviour can be explained by the break in hydrological connectivity (BRACKEN *et al.*, 2013; FRYIRS *et al.*, 2007; FRYIRS, 2013) with the event of 9 May. In this first event, the soil had low antecedent moisture, and small surface reservoirs were dry, causing breaks in the connectivity of the system (FRYIRS *et al.*, 2007) and generating sediment deposition throughout the watershed. The event of 9 May 2013, with 162 mm, a 70-year return period (using an historical series of 39 years, with the annual maximum values adjusted for the Gumbel distribution), and large erosivity, was able to break down large amounts of sediment, forming banks throughout the watershed, but due to poor connectivity was not able to transport them downstream from the watershed (BRACKEN *et al.*, 2013; FRYIRS *et al.*, 2007). Subsequent events, such

as on 10 May 2013, even with less precipitation and erosivity, were able to transport earlier disaggregated and available sediment, thereby increasing sediment yield and the SDR (MEDEIROS; ARAUJO, 2014), processes which are not considered in empirical erosion models, such as the USLE (RAHMAN *et al.*, 2009).

The low SDR values for the eight events monitored (Table 2) show that for the period studied, events of high hydrological connectivity may not have occurred in the IEW. The connectivity of the watershed may therefore be maximised when these (extreme) events occur for soil containing high antecedent moisture, together with full, small surface reservoirs (increasing the hydrologically-connected contribution area in the watershed). It is therefore emphasised that future extreme events, under favourable conditions of antecedent moisture, may display greater values for SDR, depending on the magnitude of the rainfall event and on the other variables related to hydrological connectivity in the watershed (such as soil moisture, development stage of the vegetation and storage in the reservoirs, among others).

Among the variables that influence the SDR throughout the events, is the antecedent moisture of the soils in the watershed. Several studies emphasise the influence of antecedent moisture and the temporal structure of precipitation on the generation of runoff (BRACKEN *et al.*, 2008; JAMES; ROULET, 2007; MEDEIROS *et al.*, 2010; MEDEIROS *et al.*, 2014; MEDEIROS; ARAUJO, 2014; SANTOS *et al.*, 2011). Monitoring soil moisture is expensive and difficult to measure in the face of the many types of soil in a watershed, so the analysis of parameters such as total rainfall depth for a certain number of days earlier is a good indication of the state of the soil moisture. According to Figure 5, the higher the value for antecedent precipitation, the greater the

Table 2 - Values by hydrological event for rainfall, erosivity (EI30), runoff, observed sediment yield (SY), gross erosion estimated by the USLE, and SDR, for the Iguatu Experimental Watershed (IEW)

Event	Rainfall (mm)	EI30 (MJ mm ha ⁻¹ h ⁻¹)	Runoff (mm)	Observed SY	Estimated erosion	SDR (%)
				(t ha ⁻¹ ano ⁻¹)	(t ha ⁻¹ ano ⁻¹)	
09/May/2013	162.0	2868.9	43.53	0.067	12.683	0.53%
10/May/2013	48.0	421.4	28.27	0.028	1.863	1.48%
06/Mar/2014	58.1	284.9	2.05	0.001	1.260	0.08%
12/Mar/2014	44.3	449.0	7.92	0.013	1.985	0.64%
16/Mar/2014	33.0	125.0	3.26	0.001	0.553	0.22%
04/Apr/2014	69.3	1902.5	15.43	0.019	8.411	0.22%
07/Apr/2014	33.9	191.1	7.74	0.005	0.845	0.58%
12/Apr/2014	72.0	645.3	42.97	0.048	2.853	1.67%

SDR. The best correlation between SDR and antecedent precipitation was for 15 days; this is therefore the best parameter to represent the effect of antecedent moisture in the IEW.

Analysing individual events further, a good correlation is found in the IEW between sediment yield and rainfall (Figure 6A), with a coefficient of determination R^2 of 0.69, indicating a positive increase in sediment input with rainfall magnitude. For the relationship between sediment yield and runoff (Figure 6B), an excellent coefficient of determination was achieved, $R^2 = 0.93$. High correlations of this nature indicate conditions of sediment yield limited by the transport capacity of the events. Sediment yield in the area is therefore related to the transport capacity of the flow if there is disaggregated sediment available for transport. For authors like Medeiros *et al.* (2010), sediment yield in the semi-arid region of Brazil is limited by the conditions of transport, and not by the availability of eroded material. However, it should be emphasised that the results of the present study were obtained for years of below average rainfall with little runoff generation, i.e. under conditions of low connectivity. It is possible that in

very rainy years, where there are also sequences of rainfall events with a high return period, the sediment accumulated in the watershed will be carried to the outflow, as discussed by Medeiros and Araujo (2014). In that case, sediment yield in later events may be limited by the availability of material.

The events of 9 May 2013 and 4 April 2014 (Figure 6C) showed high values for EI30 (Table 2), causing considerable sediment disaggregation. Events of this nature, with high values for erosivity when modelled by the USLE, display a high rate of modelled gross erosion, as sediment transport capacity is not considered. However, the actual sediment transport capacity is well below the availability of disaggregated sediment, resulting in a low SDR. Therefore, by excluding these two extreme EI30 events (below the line), the value for R^2 in Figure 6C goes from 0.39 to 0.88, displaying good agreement between the total runoff for the event and the SDR. It can thus be seen that the greater the runoff depth, the greater will be the hydrological connectivity of the watershed, and the greater the energy for the transport of disaggregated sediment particles, thereby increasing the value of the SDR.

Figure 5 - Correlations by event between the SDR and values for antecedent precipitation over the last 5 (A), 15 (B) and 30 days (C), for the Iguatu Experimental Watershed (IEW)

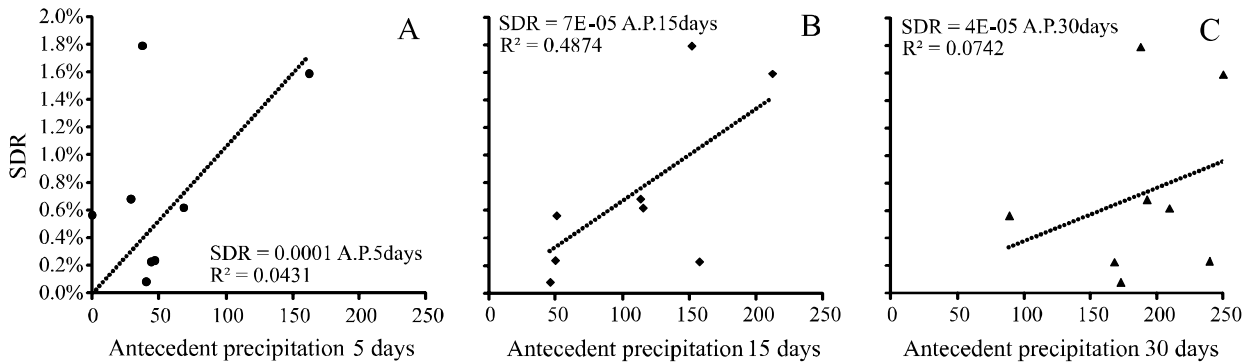
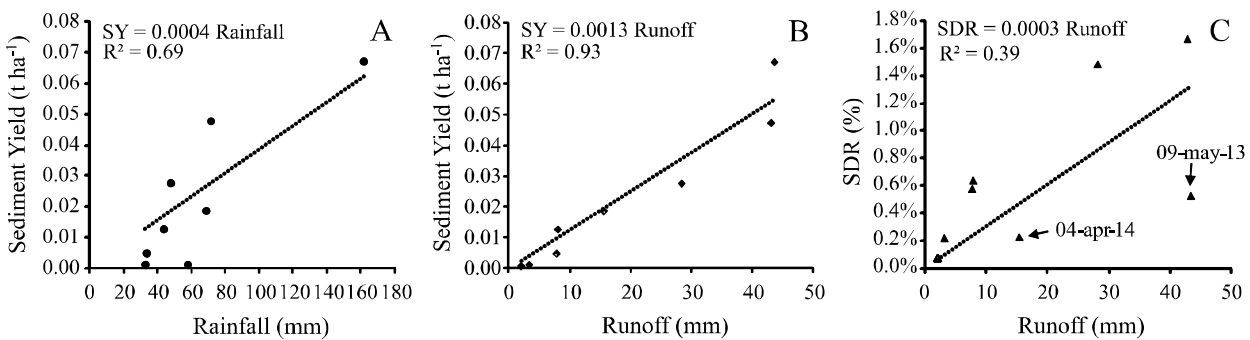


Figure 6 - Relationships between sediment yield and rainfall (A); sediment yield and runoff (B); SDR and runoff (C), for the Iguatu Experimental Watershed (IEW)



CONCLUSIONS

1. Application of the Universal Soil Loss Equation (USLE) to the Iguatu Experimental Watershed (IEW) indicated values for soil loss which varied from 0 to 1,498 t ha⁻¹ yr⁻¹. Furthermore, 93.8% of the area of the IEW was classified as being at low risk of erosion, less than 5 t ha⁻¹ yr⁻¹, even in 2014, the year with the highest total precipitation and erosivity;
2. The mean annual sediment delivery ratio (SDR) for the IEW is low for those years of below average rainfall and therefore under conditions of reduced connectivity, with a mean annual value of 0.37%; for individual events, this ranged from 0.08% to 1.67%;
3. As well as the absence of events of high hydrological connectivity during the study period, the low values for SDR in the IEW may be related to the low slopes in the watershed, the good state of conservation of the vegetation, and the presence of small surface reservoirs, which when dry, reduce the contribution area of the watershed.
4. Events of high rainfall depth resulted in major sediment breakdown in the IEW, but without sufficient transport energy for drag, generating low SDR values; subsequent events, even when of lower erosivity, transported the readily available sediment, resulting in higher values for the SDR;
5. The strong correlation seen between runoff and sediment yield indicates that sediment yield in the region was limited by the transport conditions during the period of study;
6. SDR values by event, which is an indicator of hydrological connectivity, presented strong correlation with accumulated antecedent precipitation for the previous 15 days in the IEW, demonstrating the importance of the sequence of rainy days (an indirect index of soil moisture content) to hydrological connectivity in the different units of the watershed.

REFERENCES

- ALBUQUERQUE, A. W. *et al.* Determinação de fatores da equação universal de perdas de solo em Sumé, PB. **Revista Brasileira de Engenharia Agrícola e Ambiental**, v. 9, n. 2, p. 153-160, 2005.
- ALEXAKIS, D. D. *et al.* Integrated use of remote sensing, GIS and precipitation data for the assessment of soil erosion rate in the catchment area of "Yialias" in Cyprus. **Atmospheric Research**, v. 131, p. 108-124, 2013.
- BESKOW, S. *et al.* Soil erosion prediction in the Grande River Basin, Brazil using distributed modeling. **Catena**, v. 79, p. 49-59, 2009.
- BRACKEN, L. J. *et al.* Concepts of hydrological connectivity: research approaches, pathways and future agendas. **Earth-Science Reviews**, v. 119, p. 17-34, 2013.
- BRACKEN, L. J. *et al.* The relationship between rainfall inputs and flood generation in South-east Spain. **Hydrological Processes**, v. 22, p. 683-696, 2008.
- BRACKEN, L. J.; CROKE, J. The concept of hydrological connectivity and its contribution to understanding runoff-dominated geomorphic systems. **Hydrological Processes**, v. 21, n. 13, p. 1749-1763, 2007.
- DE VENETE, J. *et al.* Spatially distributed modelling of soil erosion and sediment yield at regional scales in Spain. **Global and Planetary Change**, v. 60, p. 393-415, 2008.
- DESMET, P. J. J.; GOVERS, G. A GIS procedure for automatically calculating the USLE LS factor on topographically complex landscape units. **Journal of Soil and Water Conservation**, v. 51, p. 427-433, 1996.
- FOSTER, G. R. *et al.* Conversion of the universal soil loss equation to SI metric units. **Journal of Soil and Water Conservation**, v. 36, p. 355-359, 1981.
- FRYIRS, K. (Dis) Connectivity in catchment sediment cascades: a fresh look at the sediment delivery problem. **Earth Surface Processes and Landforms**, v. 38, p. 30-46, 2013.
- FRYIRS, K. A. *et al.* Buffers, barriers and blankets: the (dis) connectivity of catchment-scale sediment cascades. **Catena**, v. 70, p. 49-68, 2007.
- IRVEM, A. *et al.* Estimating spatial distribution of soil loss over Seyhan River Basin in Turkey. **Journal of Hydrology**, v. 336, p. 30-37, 2007.
- JAMES, A. L.; ROULET, N. T. Investigating hydrologic connectivity and its association with threshold change in runoff response in a temperate forested watershed. **Hydrological Processes**, v. 21, p. 3391-3408, 2007.
- LOPES, F. B. *et al.* Uso de geoprocessamento na estimativa da perda de solo em microbacia hidrográfica do semiárido brasileiro. **Revista Agro@mbiente On-line**, v. 5, n. 2, p. 88-96, 2011.
- LU, H. *et al.* Modelling sediment delivery ratio over the Murray Darling Basin. **Environmental Modelling & Software**, v. 21, p. 1297-1308, 2006.
- MEDEIROS, P. H. A. *et al.* Connectivity of sediment transport in a semiarid environment: a synthesis for the Upper Jaguaribe Basin, Brazil. **Journal of Soils and Sediments**, v. 14, p. 1938-1948, 2014.
- MEDEIROS, P. H. A. *et al.* Modelling spatio-temporal patterns of sediment yield and connectivity in a semi-arid catchment with the WASA-SED model. **Hydrological Sciences Journal**, v. 55, p. 636-648, 2010.
- MEDEIROS, P. H. A.; ARAÚJO, J. C. de. Temporal variability of rainfall in a semiarid environment in Brazil and its effect on sediment transport processes. **Journal of Soils and Sediments**, v. 14, p. 1216-1223, 2014.

- PANDEY, A. *et al.* Identification of critical erosion prone areas in the small agricultural watershed using USLE, GIS and remote sensing. **Water Resources Management**, v. 21, p. 729-746, 2007.
- PRASANNAKUMAR, V. *et al.* Estimation of soil erosion risk within a small mountainous sub-watershed in Kerala, India, using Revised Universal Soil Loss Equation (RUSLE) and geo-information technology. **Geoscience Frontiers**, v. 3, n. 2, p. 209-215, 2012.
- RAHMAN, M. R. *et al.* Soil erosion hazard evaluation-An integrated use of remote sensing, GIS and statistical approaches with biophysical parameters towards management strategies. **Ecological Modelling**, v. 220, p. 1724-1734, 2009.
- RIBEIRO, L. S.; ALVES, M. G. Análise de suscetibilidade à erosão laminar no município de Campos dos Goytacazes/RJ através de técnicas de geoprocessamento. **Estudos Geográficos (UNESP)**, v. 6, p. 89-100, 2008.
- SANTOS, J. C. N. *et al.* Determinação do fator de cobertura e dos coeficientes da MUSLE em microbacias no semiárido brasileiro. **Revista Brasileira de Engenharia Agrícola e Ambiental**, v. 18, n. 11, p. 1157-1164, 2014.
- SANTOS, J. C. N. *et al.* Runoff and soil and nutrient losses in semiarid uncultivated fields. **Revista Ciência Agronômica**, v. 42, p. 813-820, 2011.
- SILVA, R. M. *et al.* Predicting soil erosion and sediment yield in the Tapacurá Catchment, Brazil. **Journal of Urban and Environmental Engineering**, v. 8, n. 1 p. 75-82, 2014.
- WILLIAMS, J. R.; ARNOLD, J. G. A system of erosion - sediment yield models. **Soil Technology**, v. 11, p. 43-55, 1997.
- WISCHMEIER, W. H.; SMITH, D. D. **Predicting rainfall erosion losses: a guide to conservation planning**. Washington: United States Department of Agriculture, 1978. 58 p.
- ZHOU, W.; WU, B. Assessment of soil erosion and sediment delivery ratio using remote sensing and GIS: a case study of upstream Chaobaihe River catchment, north China. **International Journal of Sediment Research**, v. 23, p. 167-173, 2008.